

PROLARIS® HELPS TO MAKE BETTER-INFORMED DECISIONS^{1,2}

- Provides information no other test can
- Helps in determining your course of treatment
- Gives you and your doctor more confidence in your treatment decision

For more information, please contact Myriad at:

prolariscs@myriad.com or
call (855) 469-7765

You can also visit us online at: Prolaris.com

REFERENCES

1. Centers for Disease Control and Prevention (CDC). Prostate cancer. Centers for Disease Control and Prevention website. <https://www.cdc.gov/cancer/prostate/index.htm>. Accessed August 10, 2012.
2. Chacko J, Barney DM, Fisher G, et al. Transatlantic Prostate Group. Prognostic value of a cell cycle progression signature for prostate cancer death in a conservatively managed oropharyngeal biopsy cohort. *Br J Cancer*. 2012;106(6):1-5.
3. Data on file. Salt Lake City, UT: Myriad Genetic Laboratories, Inc., 2011.



Myriad Genetic Laboratories, Inc.
201 Walpole Way
Salt Lake City, UT 84143-0530
E-mail: prolaris@myriad.com

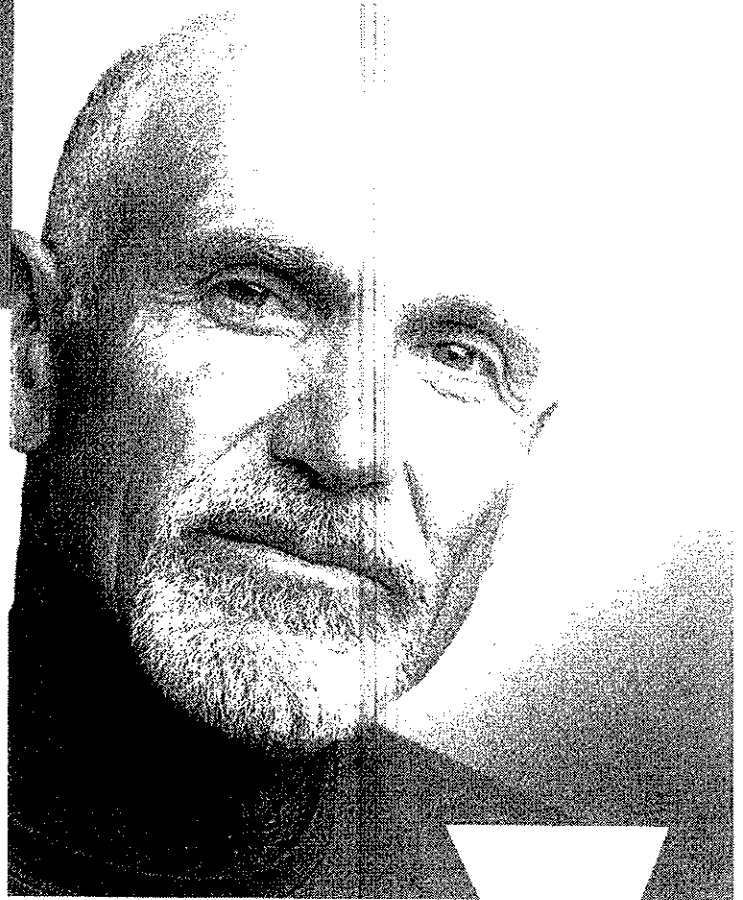
MYRIAD

Myriad, the Myriad logo, Prolaris, the Prolaris logo, Prolaris Score and Prolaris Combined Score are either trademarks or registered trademarks of Myriad Genetics, Inc., in the United States and other jurisdictions. Medical use for illustrative purposes only.

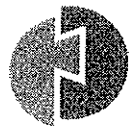
©2013 Myriad Genetic Laboratories, Inc.
PMP1200-06-13

THE PROLARIS® TEST

Understand The **True Nature**
Of Your Prostate Cancer.



Prolaris is the only test that
measures how fast your tumor
is growing.



Prolaris®

Truly Revealing

A Common Diagnosis



About 1 in 6 American men receive a diagnosis of prostate cancer in their lifetime. Fortunately, because most prostate cancers are slow growing and not aggressive, only 3% of men with prostate cancer die from it.¹

There's Nothing Common About Your Cancer

While a diagnosis of prostate cancer is alarming, it's important to know that prostate cancers aren't all the same. With ProlarisSM you have the ability to learn more about the aggressiveness of your specific tumor, so you and your doctor can make a more informed decision about your treatment.^{2,3}

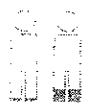
PSA and Gleason May Not Reveal The Whole Picture

You most likely know your prostate-specific antigen (PSA) level and your Gleason score. These tests tell your doctor how far your cancer has progressed, but not necessarily the **"aggressiveness"** of your disease. Since cancer is the uncontrolled rapid growth of abnormal cells, an aggressive prostate tumor carries the potential risk of growing and spreading rapidly to other parts of your body.

Prolaris Provides A New Measure

Prolaris provides a measure of the aggressiveness^{2,3} of your individual prostate cancer. Getting a Prolaris ScoreSM will give you and your doctor additional information about the true nature of your cancer that no other test can.

Prolaris clarifies risk



2% vs. 12%

Two patients with the same PSA and Gleason scores may have a very different estimate of mortality risk when their Prolaris Score is included in their evaluation.

What is Prolaris?

Prolaris is a measure of how fast your tumor is growing. Since you have already had a biopsy, that same tissue sample can be used to determine your Prolaris Score. Studies have shown that Prolaris provides an accurate assessment of cancer aggressiveness.^{2,3} And, because every individual's prostate cancer is different, the result of your Prolaris test is unique to you.

Your Cancer— Your treatment decision

Your Prolaris Score provides unique information that can help you and your doctor make the best treatment decision for you.^{2,3} For example, if you have a low-risk cancer and a low Prolaris Score, you and your doctor may choose to delay treatment and just monitor it closely. This is called active surveillance. On the other hand, if your Prolaris Score reveals a more aggressive cancer, an equally aggressive therapy may be appropriate.

After you receive the results of your test, you and your doctor will decide your course of treatment. The added information from the Prolaris Score can allow you to have more confidence in the decisions you make about your medical care.

The Myriad Promise:

- When Prolaris is ordered for you, we will work with your insurance provider to help you get the appropriate coverage allowed by your plan.
- If your out of pocket expense will exceed \$375, we will call you before processing your test to discuss payment plan options that are available to you.
- We won't call if your bill will be \$375 or less, but if you have concerns about your bill, you can contact us at the 800 number that appears on your bill and we guarantee that we will work with you to come up with an option that's right for you.